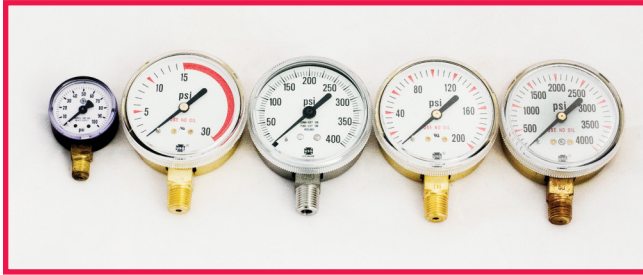


PRESSURE GAUGES



DESCRIPTION

The selection of brass, stainless steel, and monel® gauges presented here represent those used on pressure regulators offered in this catalog. They can be used as repair parts or for installation in other systems.

FEATURES

- 1/4" NPT lower male connection.
- Cleaned for oxygen service - brass and stainless steel only.

HOW TO ORDER

BRASS WITH BRASS CASE - 2 1/2" DIA.

Model	Pressure Range - psig
9131-4PM-0015RL	0-30 (15RL)
9131-4PM-0030	0-30
9131-4PM-0060	0-60
9131-4PM-0100	0-100
9131-4PM-0200	0-200
9131-4PM-0400	0-400
9131-4PM-2000	0-2000
9131-4PM-6000	0-6000
9131-4PM-7500	0-7500

316 STAINLESS STEEL WITH STAINLESS STEEL CASE - 2 1/2" DIA.

Model	Pressure Range - psig
9132-4PM-3030	30" 0-30
9132-4PM-0030	0-30
9132-4PM-0060	0-60
9132-4PM-0100	0-100
9132-4PM-0200	0-200
9132-4PM-0400	0-400
9132-4PM-1000	0-1000
9132-4PM-2000	0-2000
9132-4PM-3000	0-3000
9132-4PM-6000	0-6000
9132-4PM-10000	0-10000

MONEL® WITH STAINLESS STEEL CASE - 2 1/2" DIA.

Model	Pressure Range - psig
9133-4PM-0100	0-100
9133-4PM-0300	0-300
9133-4PM-1000	0-1000
9133-4PM-3000	0-3000

Other sizes and ranges available.

GAUGES WITH FACE SEAL FITTINGS

DESCRIPTION

On some high purity regulators the gauges are connected to the regulator body by using face seal fittings rather than NPT threads.

FEATURES

- 1/4" female face seal connection.
- Dual scale dial psig/bar.
- Cleaned for oxygen service.

HOW TO ORDER

316 stainless steel with stainless steel case 2" dia.

Model	Pressure Range
9122-4VM-3030	30" vac.- 0-30 psig (-1.0 - 2 bar)
9122-4VM-3060	30" vac.- 0-60 psig (-1.0 - 4 bar)
9122-4VM-3100	30" vac. - 0-100 psig (-1.0 - 7 bar)
9122-4VM-0200	0-200 psig (0-14 bar)
9122-4VM-0400	0-400 psig (0-28 bar)
9122-4VM-1000	0-1000 psig (0-70 bar)
9122-4VM-4000	0-4000 psig (0-280 bar)

